

# STICK-ON DECALS

## INSTRUCTIONS

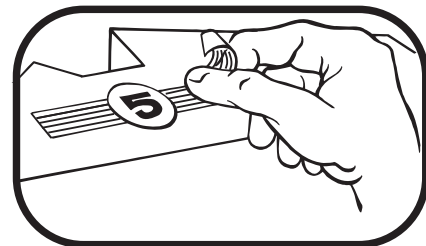
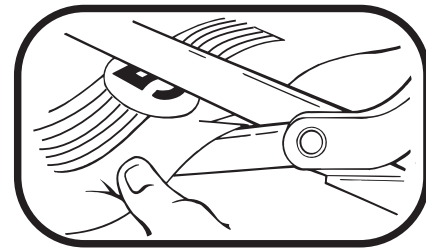
- Cut out the Decals you want to apply.
- Test-fit before peeling off backing.
- When you are sure of placement, peel off backing and place Decal on your Racer.

## HINTS AND SUGGESTIONS

- Apply to clean, dust-free surface. Dust can keep Decal from sticking.
- When cutting out Decal, trim as close to design as possible.
- If Decal is crooked after application, carefully pull it up and reposition.

## TIP!

- For maximum durability, apply a very light coat of gloss. Test gloss on a small area before applying to entire racer.



## INSTRUCTIONS

- Découper les autocollants que l'on souhaite appliquer.
- Vérifier l'ajustement avant de peler le papier dorsal.
- Lorsqu'on est certain du positionnement, peler le papier dorsal et placer l'autocollant sur le modèle de course.

## HINTS AND SUGGESTIONS

- Apply to clean, dust-free surface. Dust can keep Decal from sticking.
- When cutting out Decal, trim as close to design as possible.
- If Decal is crooked after application, carefully pull it up and reposition.

## ASTUCE!

- Pour maximum de durabilité, s'appliquer une très légère couche de brillant. L'essai brillant sur une petite zone avant d'appliquer à l'ensemble coureur.

