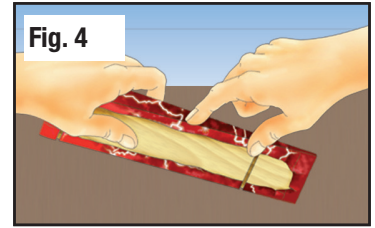
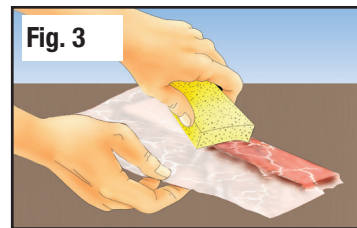
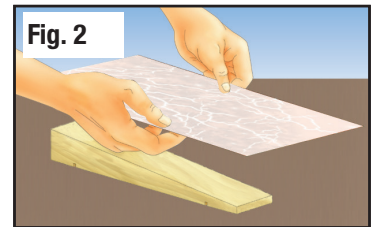
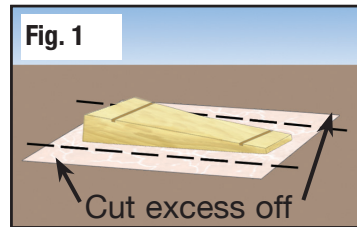


BODY SKIN® CUSTOM TRANSFER

CAMOUFLAGE P3978

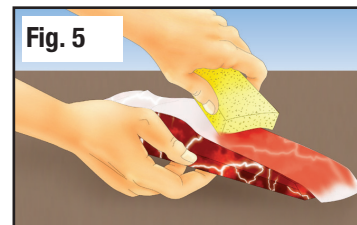
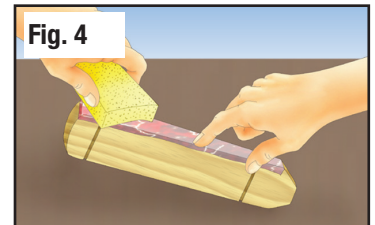
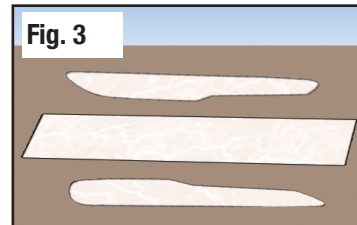
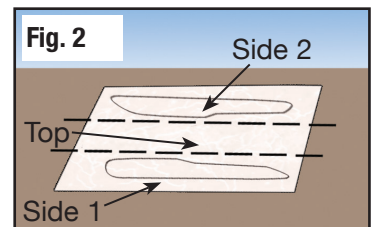
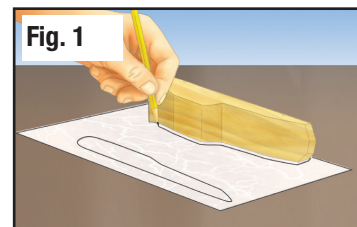
SIMPLE CAR SHAPES - FULL SHEET APPLICATION

1. Sand car with coarse (#80) grit sandpaper, followed by fine (#220) grit sandpaper. Wipe car with a clean rag to remove dust.
2. Place car top-side-down on Body Skin. Fold Body Skin up along all sides of car and mark approximately 1/2 in overlapping bottom of car. Cut off marked area (**Fig. 1**).
3. Peel off backing paper and center sticky side of Body Skin on top of car (**Fig. 2**). Smooth Body Skin over car, working from one side to the other.
4. Moving a wet sponge from front of car to rear slowly, saturate Body Skin with water (**Fig. 3**). The carrier sheet will release from the Body Skin as you apply water. Fold and smooth Body Skin under bottom of car (**Fig. 4**).
5. Smooth out wrinkles by dipping fingers or sponge in water and rubbing over Body Skin. Allow to dry thoroughly.
6. To make windshield or windows from included Black Window Material, cut out desired shapes and attach to car in the same manner as the Body Skin.
7. If desired, apply a water-based gloss finish. Test gloss finish on small, inconspicuous area before applying to entire Body Skin. Some gloss finishes may cause cracking and bubbling.



CONTOURED CAR SHAPES - THREE-PIECE APPLICATION

1. Sand car with coarse grit (#80) sandpaper, followed by fine grit (#220) sandpaper. Wipe car with a clean rag to remove dust.
2. Place car on its side on edge of Body Skin. Trace both sides of car (**Fig. 1**), leaving a 1/8 in border. Use middle section of Body Skin for top of car (**Fig. 2**).
3. Cut out Side patterns and Top piece (**Fig. 3**).
4. Peel backing paper from Side 1 pattern and place sticky side on car.
5. Using a wet sponge, saturate Body Skin with water. Slide sponge down car slowly. Fold and smooth Body Skin over top edge and underneath car (**Fig. 4**). The carrier sheet will release from Body Skin as you apply water. Smooth out wrinkles by dipping fingers or sponge in water and rubbing over Body Skin.
6. Repeat Steps 4 and 5 for Side 2 pattern.
7. Apply Top piece in same manner as noted in Step 5 (**Fig. 5**). Allow to dry thoroughly.
8. To make windshield or windows from included Black Window Material, cut out desired shapes and attach to car in same manner as Body Skin (**Fig. 6**).
9. If desired, apply a water-based gloss finish. Test gloss finish on small, inconspicuous area before applying to entire Body Skin. Some gloss finishes may cause cracking and bubbling.



TIP! Create accents by cutting Body Skin into desired shapes and applying to painted car (**Fig. 7**).

NOTE: Some car designs may require cutting out small sections of Body Skin and applying piece-by-piece or making precision cuts.

CAUTION: Tools recommended. Use with care.
MISE EN GARDE : Outils recommandés. Utiliser avec précaution.

Conforms to Health Requirements of ASTM D4236